

G·PLUS

CORDLESS ROTARY POLISHING MACHINE.



PRODUCT INFORMATION

PRODUCTS	CODE	QTY.
G Plus Cordless Rotary Polisher (tool only)	GPT050	1

ACCESSORIES	CODE	QTY.
G Plus 18V 5.0Ah Battery	GPT150	1
G Plus Twin Bay Charger	GPT151	1

PRODUCT DESCRIPTION

The G Plus Cordless Rotary Polishing Machine has been developed to Farécla's own specifications.

The soft start motor helps reduce product splash while the speed stabilisation offers the operator a constant speed output. The ergonomically engineered handle fits snugly into the grip of the operator and it is an exceptionally well-balanced machine that minimises vibration and the associated user fatigue.

The polishing machine is very lightweight, and provides cool running for large polishing jobs.

The thumb-operated speed dial gives variable speed control from 700 – 1800 rpm.

Typical run time 45 mins (for 150 mm / 6" pads) and charge time from empty 1 hour.



Comes with a free G Mop Flexible Back Plate for 150 mm / 6" Range Pads

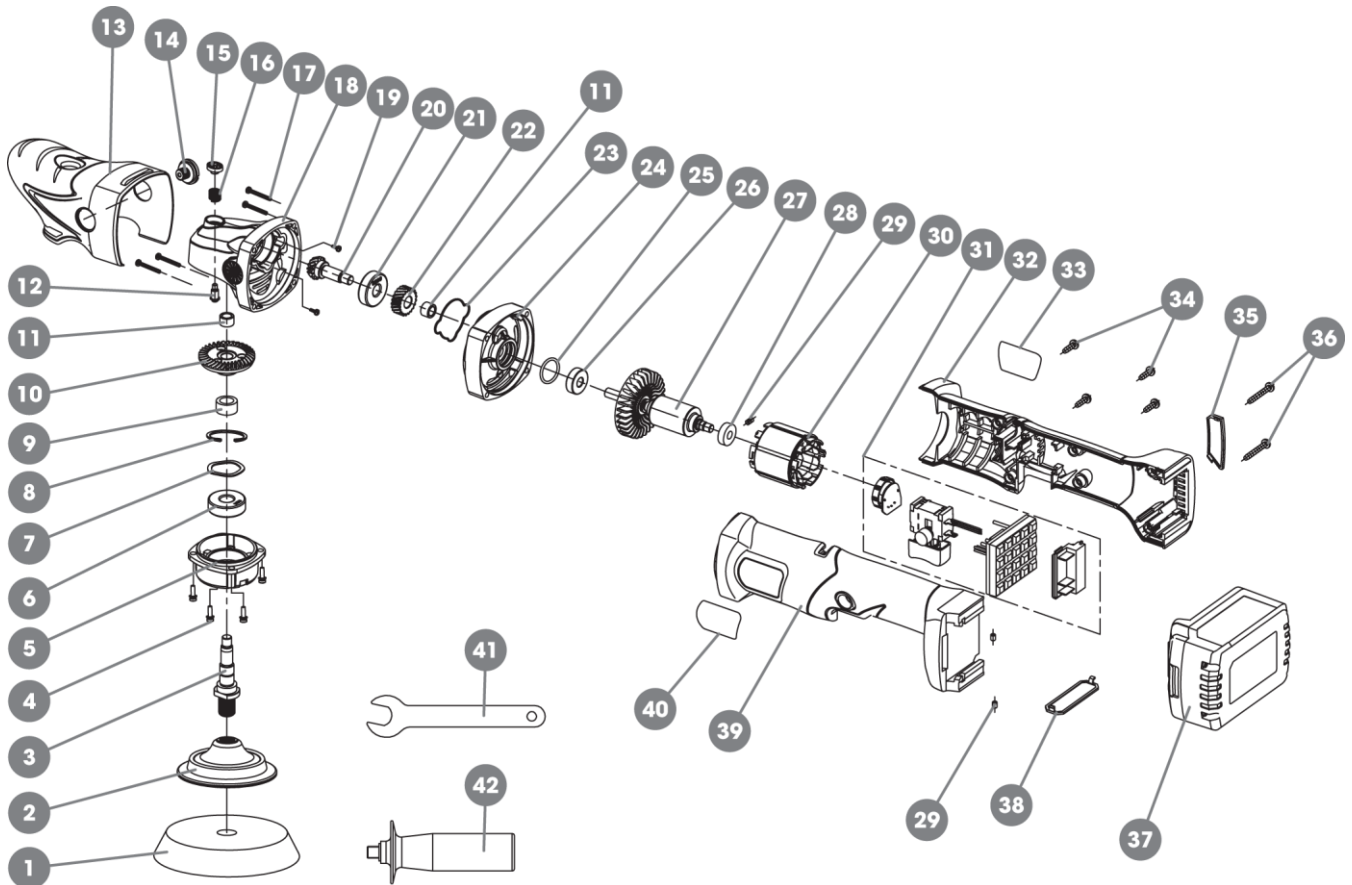
KEY BENEFITS

LIGHTWEIGHT	Only 1.8 kg, reducing muscle fatigue. Far lighter than many competitors.
700 - 1800 RPM	Good for almost all Farécla compounds (sole exception Profile 200)
BRUSHLESS MOTOR	No maintenance and longer battery life per charge
LOW VIBRATIONS	Main handle 2.37 m/s ² . auxiliary handle 2.521 m/s ² . This enables quiet running as well as comfortable handling
BACK PLATE INCLUDED	Free G Mop Flexible Back Plate (14 mm thread), ideal for use with the Farécla G Mop 150 mm / 6" applicator range



fareclaproductsltd

Farécla | SURFACE FINISHING SPECIALISTS



SPARE PARTS

No.	Part name	No.	Part name	No.	Part name
1	Applicator - GMC650 / GMC622 / GMF622	16	Pin spring	31	Controller assembly - GPT120
2	Back plate - GMB146	17	Screw ST4.2 x 40	32	Housing (right)
3	Output shaft	18	Gear case	33	Farécla label
4	Screw M4 x 14	19	Gear sha	34	Screw ST4.2 x 14
5	Gear case cover	20	Gear sha	35	Filter screen (R) - GPT103
6	Ball bearing 6201-2RS	21	Ball bearing 6200-2RS	36	Screw ST4.2 x 30
7	Wave spring washer 32	22	Bevel gear Z2	37	Battery - GPT150
8	Circlip for holes 32	23	Rubber seal ring	38	Filter screen (D) - GPT104
9	Gear washer	24	Bearing retainer	39	Housing (left)
10	Gear	25	O-Ring 21.2 x 1.8	40	Technical information label
11	Oil-impregnated bearing	26	Ball bearing 608-DW	41	Wrench 17
12	Spindle-lock pin	27	Armature - GPT132	42	Side handle
13	Plastic case cover	28	Ball bearing 607-2RZ		
14	Plastic screw M10 x 8	29	Rubber pin		
15	Lock pin cap	30	Field coil - GPT102		



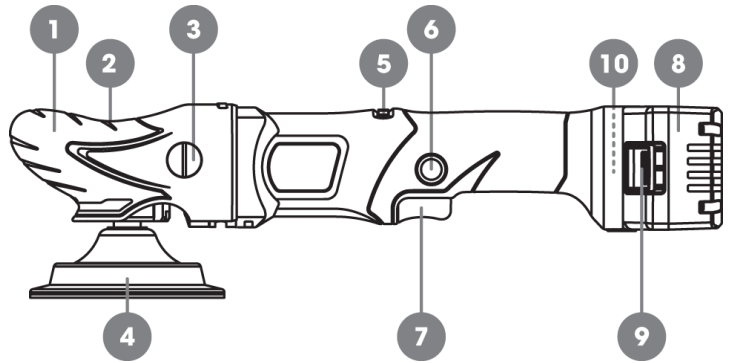
fareclaproductsltd

Farécla | SURFACE FINISHING SPECIALISTS

Only use the charger and battery pack specified by Farécla. Read the operator's manual supplied with your charger and battery.

FUNCTIONAL DESCRIPTION

1. Front Grip
2. Spindle Lock Button
3. Side Handle Socket Cap
4. Backing Plate
5. Speed Control Dial
6. Trigger Lock Button
7. Switch Trigger
8. Battery
9. Battery Release Button
10. Vents (right side and underneath)



SPARE PARTS

PARTS	CODE	QTY.	PARTS	CODE	QTY.
Speed controller	GPT162	5	Armature	GPT156	1
Field coil	GPT102	1	Filter screen (R)	GPT103	100
Rubber ring	GPT189	10	Filter screen (D)	GPT104	100
Gear	GPT186	10	Guard	GPT185	1
Pinion	GPT188	20	Lock pin cap	GPT187	100



G PLUS RECHARGEABLE LI-ION BATTERY
18V (5.0Ah)
GPT150 (780727 73702)



G PLUS 18V TWIN BAY CHARGER
GPT151 (780727 73704)

- Charger supplied with UK and EU plug leads
- Recommended temperature range for machine use and battery charging: +4°C to +40°C
- Charger has twin cooling fans
- Battery and charger both have charge indicator lights

ALTERNATIVE G PLUS POLISHERS:

- G Plus Electric Rotary Polishing Machine (with power cord) – UK 3-pin type G plug
- G Plus Electric Rotary Polishing Machine (with power cord) – EU 2-pin type C plug
- G Plus Electric Dual Action Polishing Machine (with power cord) – UK 3-pin type G plug
- G Plus Electric Dual Action Polishing Machine (with power cord) – EU 2-pin type C plug
- G Plus Cordless Dual Action Polishing Machine – Suitable for UK and EU

- CODES**
GPT003
GPT002
GPT203
GPT202
GPT250

